

ABOUT SIET

Sreyas Institute of Engineering & Technology was established in the year 2011 under the agencies of Sreyas Educational society. The Institute endeavors to impart high quality , competency based technical education in Engineering and technology to students with skills and abilities to face challenging needs of industry and society .The Institute is approved by All Indian Council for Technical Education (AICTE), New Delhi and affiliated to JNTUH .

The Department of Computer Science and Engineering Established in the year 2011. The major objective of Department is to impact high quality Education and research. The department of CSE is an intellectually challenging discipline . Our Students undergo entrepreneurship and inventiveness workshops and coding sessions. which strive to be the most innovative in the world. The infrastructure is absolutely world-class with opportunities to build practical skills in state-of-the-art laboratories and workshops

ABOUT CSE DEPARTMENT

The Department of Computer Science and Engineering is one of the pioneer departments of SIET with an intake of 240 in UG and 24 in PG. The Department of Computer Science and Engineering since its inception in the year 2011 offers programme keeping in pace in technological advancements. Department offers Post Graduate course M.TECH – CSE . Importance to practical training which lay great stress on "hands on" experience besides a sound theoretical background is practiced. Short term courses and technical lectures by eminent professors and professionals are arranged on a regular basis to broaden the knowledge spectrum of students. The state-of-the-art computer centre has over 700 computers with 100 Mbps internet connectivity. The department has highly qualified and experienced faculty to offer

IMPORTANT DATES

Last Date of submission : 17/11/2016
Information of acceptance : 19/11/2016

ALL CORRESPONDENCE TO

The HOD, CSE Dept., SIET,
Bandlaguda, Hyderabad-500068.
E-mail: purushotham.m@sreyas.ac.in

ORGANIZING COMMITTEE

CHIEF PATRONS

Sri. A. VinayKumar Reddy, Chairman, SIET.

PATRONS

Sri. Ch.RavindranathYadav, Seceratry, SIET

CHAIRMAN

Dr.SureshAkella, Principal, SIET.

CONVENOR

Mrs. Padmajoshi,
Asso. Prof & Head, Dept. of CSE, SIET.

COORDINATOR

Dr.M.Purushotham
Professor, CSE.
Ph:9398785865

CO-COORDINATORS

Mr.G.Sravankumar.
Asso. Prof., CSE
Ph:9441926953
Mr. K.Rohit
Asst. Prof., CSE
Ph:8885524460

MEMBERS

All faculty of CSE

RESOURCE PERSONS

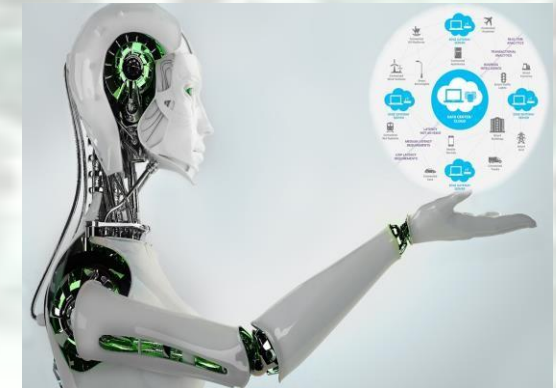
Dr.A.Rama Murthy
Professor.
Dr.Padmaja
Professor.

Workshop

on

Artificial Intelligence

21st– 23rd November, 2016



Organized by
Department of CSE



Sreyas Institute of Engineering & Technology

G.S.I Bandlaguda, Hyderabad –
500068, Telangana State, India.
Phone: +91-(0)-40- 65814415
Website: www.sreyas.ac.in

ABOUT THE WORKSHOP

Edge computing is a distributed computing concept that integrates intelligence to edge devices, also called edge nodes, allowing data to be processed and analyzed in real time near the data collection source and need not to be uploaded directly to the cloud or to a centralized data processing system. Here, data is processed close to the data collection source, so there is no longer the need to transfer data to the cloud or to an on-premises data center for processing and analysis which will lessen the load on both network and servers. In addition to accelerating digital transformation for industrial and manufacturing enterprises, edge computing technology allows for more innovations including artificial intelligence and machine learning applications that are thriving with the breakthroughs in deep learning and the upgrade of hardware architectures. Billions of bytes of data, generated at the network edge, put great demands on data processing and structural optimization. Therefore, there exists a strong demand to integrate Edge Computing and AI, which gives birth to Edge Intelligence.

COURSE CONTENTS

- ❖ Introduction to AI, Edge computing and Nvidia Jetson Nano, Neural Networks and Keras framework.
- ❖ Building ANN Using Keras (Tensorflow backend) using sampled dataset.
- ❖ Evaluating, Improving and Tuning the ANN.
- ❖ Introduction to Arduino Nano 33 BLE Sense, tflite models and deploying tflite models in Arduino Nano 33 BLE Sense.
- ❖ Introduction to Convolutional Neural Networks and building Image Recognition model using CNN.
- ❖ Evaluating, Improving and Tuning the CNN.
- ❖ Case study and Application development in interested research area.

ELIGIBILITY

Faculty and PG students from various Engineering and MCA colleges can attend the programme. Industry persons working in the concerned discipline can also attend.

DEPARTMENT VISION

To provide engineering education in the field of Computer Science with evolving technologies and to produce self-motivated, employable individuals to society.

DEPARTMENT MISSION

1. To pioneer education in Computer Science and Engineering, Mathematics and Sciences, to mould the overall personality of students.
2. To nurture the students to be dynamic, industry ready and to have multidisciplinary skills and leadership qualities.
3. To inculcate work ethics and commitment in students for their future endeavors to serve the society.

REGISTRATION FEE

- Faculty & PG students registering for the workshop are required to pay Rs.400/- by DD in favor of the **Principal, SIET**, payable at Hyderabad.
- The registration fee includes workshop material, lunch, snacks, etc.

APPLICATION FORM

- Registration form can be downloaded from the website www.sreyas.ac.in
- Limited hostel accommodation is available for outstation lady faculty only.
- You may confirm your participation by mailing the scanned copy of registration form and DD to the following mail id.

Email:

purshotham.m@sreyas.ac.in **WEBSITE:**

www.sreyas.ac.in

Workshop

on

Artificial Intelligence

21st– 23rd November, 2016

Application Form

1. Name:.....

2. Designation:.....

3. Institution:.....

4. E-mail:.....

5. Contact No......

6. D.D No: **Bank:** **Date:**.....

7. Address for Correspondence:.....

.....

.....

.....

8. Educational Qualifications with specialization:

.....

Signature of the Applicant

Place:

Date:



SREYAS Institute of Engineering & Technology

(Approved by AICTE, New Delhi | Affiliated to JNTUH, Hyderabad)
Hyderabad | PIN: 500068

PURPOSE OF WORKSHOP

Edge computing is a distributed computing concept that integrates intelligence to edge devices, also called edge nodes, allowing data to be processed and analyzed in real time near the data collection source and need not to be uploaded directly to the cloud or to a centralized data processing system.

Here, data is processed close to the data collection source, so there is no longer the need to transfer data to the cloud or to an on-premises data center for processing and analysis which will lessen the load on both network and servers.

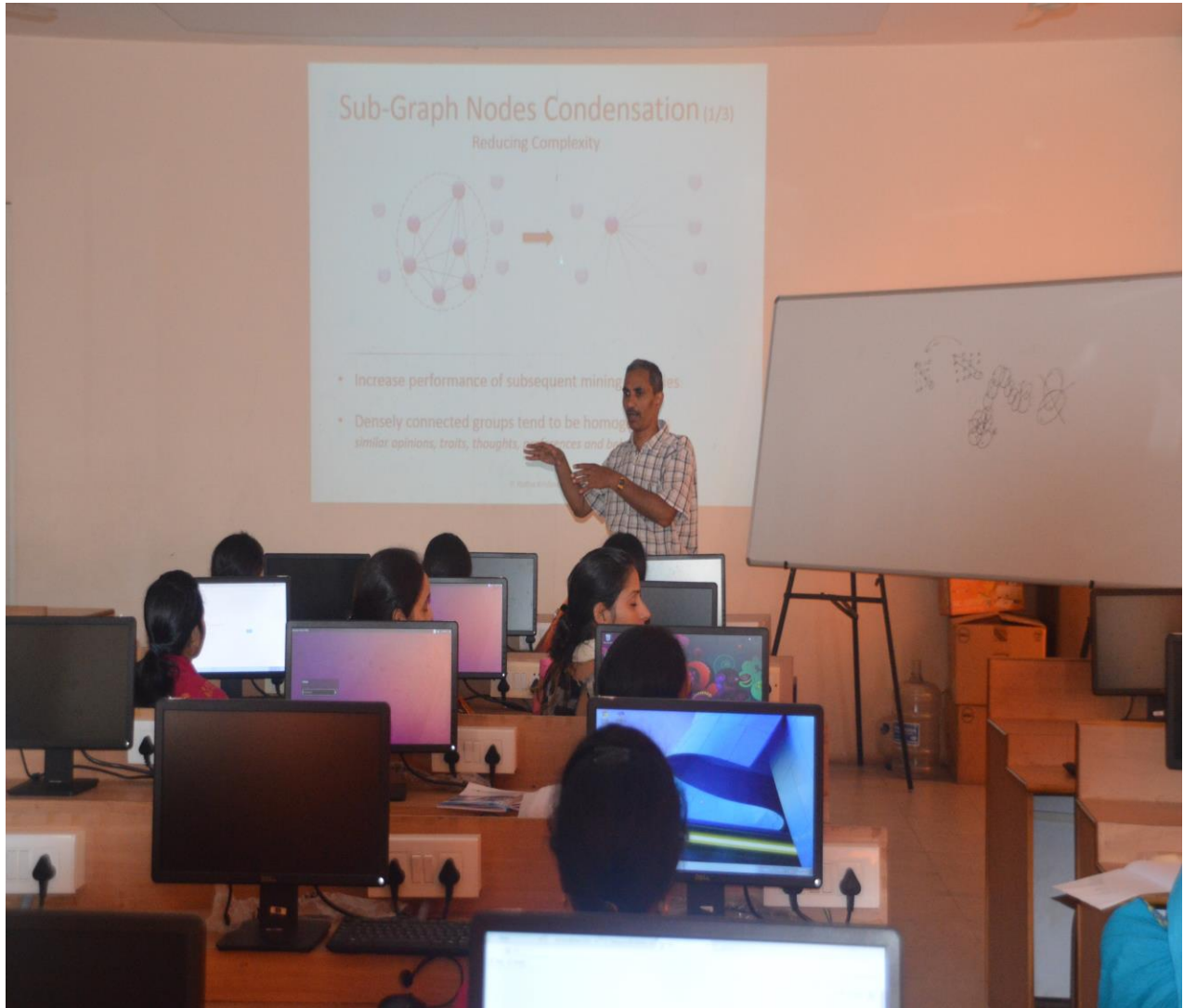
In addition to accelerating digital transformation for industrial and manufacturing enterprises, edge computing technology allows for more innovations including artificial intelligence and machine learning applications that are thriving with the breakthroughs in deep learning and the upgrade of hardware architectures.

Billions of bytes of data, generated at the network edge, put great demands on data processing and structural optimization. Therefore, there exists a strong demand to integrate Edge Computing and AI, which gives birth to Edge Intelligence.



SREYAS Institute of Engineering & Technology

(Approved by AICTE, New Delhi | Affiliated to JNTUH, Hyderabad)
Hyderabad | PIN: 500068





SREYAS Institute of Engineering & Technology

(Approved by AICTE, New Delhi | Affiliated to JNTUH, Hyderabad)
Hyderabad | PIN: 500068

RESOURCE PERSONS PROFILE

Dr.A.Rama Murthy,
Professor.

Name & Address	Email id & Contact no
Dr. A. Rama Murthy	ram111_sai@yahoo.com +91-9848380889

Qualification: M.Tech, Ph.D.

Degree	Discipline	Institute/University	Percentage	Year
Ph.D	Computer Science and Systems Engineering	Andhra university, Waltair.	Completed	Jan 2012

Technical SkillSet

Programming Languages	Java, Cpp, C, HTML, XML, Pl/Sql , 8085, 8051 Assembly Language
Operating Systems	Windows 98/NT/2000/Vista, Unix/Linux, MS-DOS.
Database Technologies	Oracle, MS-Access.
J2EE Technologies	Servlets, JSP, EJB, JDBC

Research On...

Domain Area	Specialization
Bio-Informatics	Diabetic Cardiomyopathy



SREYAS Institute of Engineering & Technology

(Approved by AICTE, New Delhi | Affiliated to JNTUH, Hyderabad)
Hyderabad | PIN: 500068

Research Work & Publications

S.No	Title of the Paper	Published in Journals
1	Protemic Analysis in Diabetic Cardiomyopathy	Bio informatic & Biological Insight 2008; 2:1-4 Publication online 2008 Jan 21
2	Optimize Pattren Discovery for Mining Text	International Journal on Computer Science & Technology June 2013
3	Recovering of Confidential policy administration Online Social Networks	International Journal of Reviews on Recent Electronics & Computer Science Nov 2013
4	Depletion Attacks: Automated Identification and Calculation in Wireless Sensor Networks	International Journal & Scientific Engineering and Research March 2014
5	An Algorithm of Anonymous Id Assignment for Secure Data storing on a Network	International Journal of Science Engineering and Advanced Technology Dec 2014
6	A Routing Algorithm to reduce the Queuing complexity in Communication Networks	International Journal of Science Engineering and Advanced Technology Dec 2014
7	An Efficient Intrusion and Detection Mechanism to protect Manet from Attacks	International Journal of Science Engineering and Advanced Technology Dec 2014
8	Transmission Mechanism to Effectively increse the social TV Viewing experiance by Cloud	International Journal of Science Engineering and Advanced Technology Dec 2014
9	Privacy perceptive tag in social Network data anonymization	International Journal and magazines
S.No	Title of the Paper	Published in Conferences
1	Improving Performance and Privacy in Location based service Application using GPS	ICETEN 16, Sri Narayana Gurukulam College of Engineering, Kollenchery, Ernakulan District, Kerala.



SREYAS Institute of Engineering & Technology

(Approved by AICTE, New Delhi | Affiliated to JNTUH, Hyderabad)
Hyderabad | PIN: 500068

Dr. PADMAJA.PULICHERLA

E-mail: [padmaja.j2ee@gmail.com.](mailto:padmaja.j2ee@gmail.com),

Mobile : 91- 9010570176

Experience Summary:

3 years of experience in Software Industry and **9 years** of experience in Teaching Field.

Academic Profile :

- ❖ **Awarded Ph.D in the Department of Computer Science and Engineering, A.N.U., A.P (India).**
- ❖ Ractified in August 2007 at Bapatla Engineering College.
- ❖ Participated in **NACC** work in November 2008, when working in M.L.E.C.

Technical Skills :

- Programming languages : C, C++, JAVA,IOT
- Backend: ORACLE 9i
- Operating System: Windows

Field of interest:

Object Oriented Technology, Software Engineering, Operating Systems, Algorithms, Data Structures, Artificial Intelligence and Mathematics.

Subject Taught:

Object Oriented Programming using Java, Operating Systems, Software Engineering, Artificial Intelligence.



ABOUT SIET

Sreyas Institute of Engineering & Technology was established in the year 2011 under the agencies of Sreyas Educational society. The Institute endeavors to impart high quality , competency based technical education in Engineering and technology to students with skills and abilities to face challenging needs of industry and society .The Institute is approved by All Indian Council for Technical Education (AICTE), New Delhi and affiliated to JNTUH .

The Department of Computer Science and Engineering Established in the year 2011. The major objective of Department is to impact high quality Education and research. The department of CSE is an intellectually challenging discipline . Our Students undergo entrepreneurship and inventiveness workshops and coding sessions. which strive to be the most innovative in the world. The infrastructure is absolutely world-class with opportunities to build practical skills in state-of-the-art laboratories and workshops

ABOUT CSE DEPARTMENT

The Department of Computer Science and Engineering is one of the pioneer departments of SIET with an intake of 240 in UG and 24 in PG. The Department of Computer Science and Engineering since its inception in the year 2011 offers programme keeping in pace in technological advancements. Department offers Post Graduate course M.TECH – CSE . Importance to practical training which lay great stress on "hands on" experience besides a sound theoretical background is practiced. Short term courses and technical lectures by eminent professors and professionals are arranged on a regular basis to broaden the knowledge spectrum of students. The state-of-the-art computer centre has over 700 computers with 100 Mbps internet connectivity. The department has highly qualified and experienced faculty to offer

IMPORTANT DATES

Last Date of submission : 17/11/2016
Information of acceptance : 19/11/2016

ALL CORRESPONDENCE TO

The HOD, CSE Dept., SIET,
Bandlaguda, Hyderabad-500068.
E-mail: purushotham.m@sreyas.ac.in

ORGANIZING COMMITTEE

CHIEF PATRONS

Sri. A. VinayKumar Reddy, Chairman, SIET.

PATRONS

Sri. Ch.RavindranathYadav, Seceratry, SIET

CHAIRMAN

Dr.SureshAkella, Principal, SIET.

CONVENOR

Mrs. Padmajoshi,
Asso. Prof & Head, Dept. of CSE, SIET.

COORDINATOR

Dr.M.Purushotham
Professor, CSE.
Ph:9398785865

CO-COORDINATORS

Mr.G.Sravankumar.
Asso. Prof., CSE
Ph:9441926953
Mr. K.Rohit
Asst. Prof., CSE
Ph:8885524460

MEMBERS

All faculty of CSE

RESOURCE PERSONS

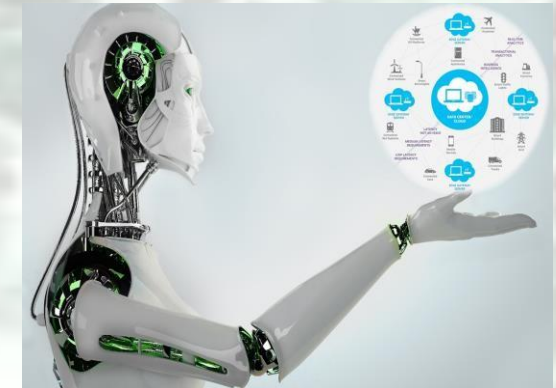
Dr.A.Rama Murthy
Professor.
Dr.Padmaja
Professor.

Workshop

on

Artificial Intelligence

21st– 23rd November, 2016



Organized by

Department of CSE



Sreyas Institute of Engineering & Technology

G.S.I Bandlaguda, Hyderabad –
500068, Telangana State, India.
Phone: +91-(0)-40- 65814415
Website: www.sreyas.ac.in

ABOUT THE WORKSHOP

Edge computing is a distributed computing concept that integrates intelligence to edge devices, also called edge nodes, allowing data to be processed and analyzed in real time near the data collection source and need not to be uploaded directly to the cloud or to a centralized data processing system. Here, data is processed close to the data collection source, so there is no longer the need to transfer data to the cloud or to an on-premises data center for processing and analysis which will lessen the load on both network and servers. In addition to accelerating digital transformation for industrial and manufacturing enterprises, edge computing technology allows for more innovations including artificial intelligence and machine learning applications that are thriving with the breakthroughs in deep learning and the upgrade of hardware architectures. Billions of bytes of data, generated at the network edge, put great demands on data processing and structural optimization. Therefore, there exists a strong demand to integrate Edge Computing and AI, which gives birth to Edge Intelligence.

COURSE CONTENTS

- ❖ Introduction to AI, Edge computing and Nvidia Jetson Nano, Neural Networks and Keras framework.
- ❖ Building ANN Using Keras (Tensorflow backend) using sampled dataset.
- ❖ Evaluating, Improving and Tuning the ANN.
- ❖ Introduction to Arduino Nano 33 BLE Sense, tflite models and deploying tflite models in Arduino Nano 33 BLE Sense.
- ❖ Introduction to Convolutional Neural Networks and building Image Recognition model using CNN.
- ❖ Evaluating, Improving and Tuning the CNN.
- ❖ Case study and Application development in interested research area.

ELIGIBILITY

Faculty and PG students from various Engineering and MCA colleges can attend the programme. Industry persons working in the concerned discipline can also attend.

DEPARTMENT VISION

To provide engineering education in the field of Computer Science with evolving technologies and to produce self-motivated, employable individuals to society.

DEPARTMENT MISSION

1. To pioneer education in Computer Science and Engineering, Mathematics and Sciences, to mould the overall personality of students.
2. To nurture the students to be dynamic, industry ready and to have multidisciplinary skills and leadership qualities.
3. To inculcate work ethics and commitment in students for their future endeavors to serve the society.

REGISTRATION FEE

- Faculty & PG students registering for the workshop are required to pay Rs.400/- by DD in favor of the **Principal, SIET**, payable at Hyderabad.
- The registration fee includes workshop material, lunch, snacks, etc.

APPLICATION FORM

- Registration form can be downloaded from the website www.sreyas.ac.in
- Limited hostel accommodation is available for outstation lady faculty only.
- You may confirm your participation by mailing the scanned copy of registration form and DD to the following mail id.

Email:

purshotham.m@sreyas.ac.in **WEBSITE:**

www.sreyas.ac.in

Workshop

on

Artificial Intelligence

21st– 23rd November, 2016

Application Form

1. Name:.....

2. Designation:.....

3. Institution:.....

4. E-mail:.....

5. Contact No......

6. D.D No: **Bank:** **Date:**.....

7. Address for Correspondence:.....
.....
.....
.....

8. Educational Qualifications with specialization:
.....
.....

Signature of the Applicant

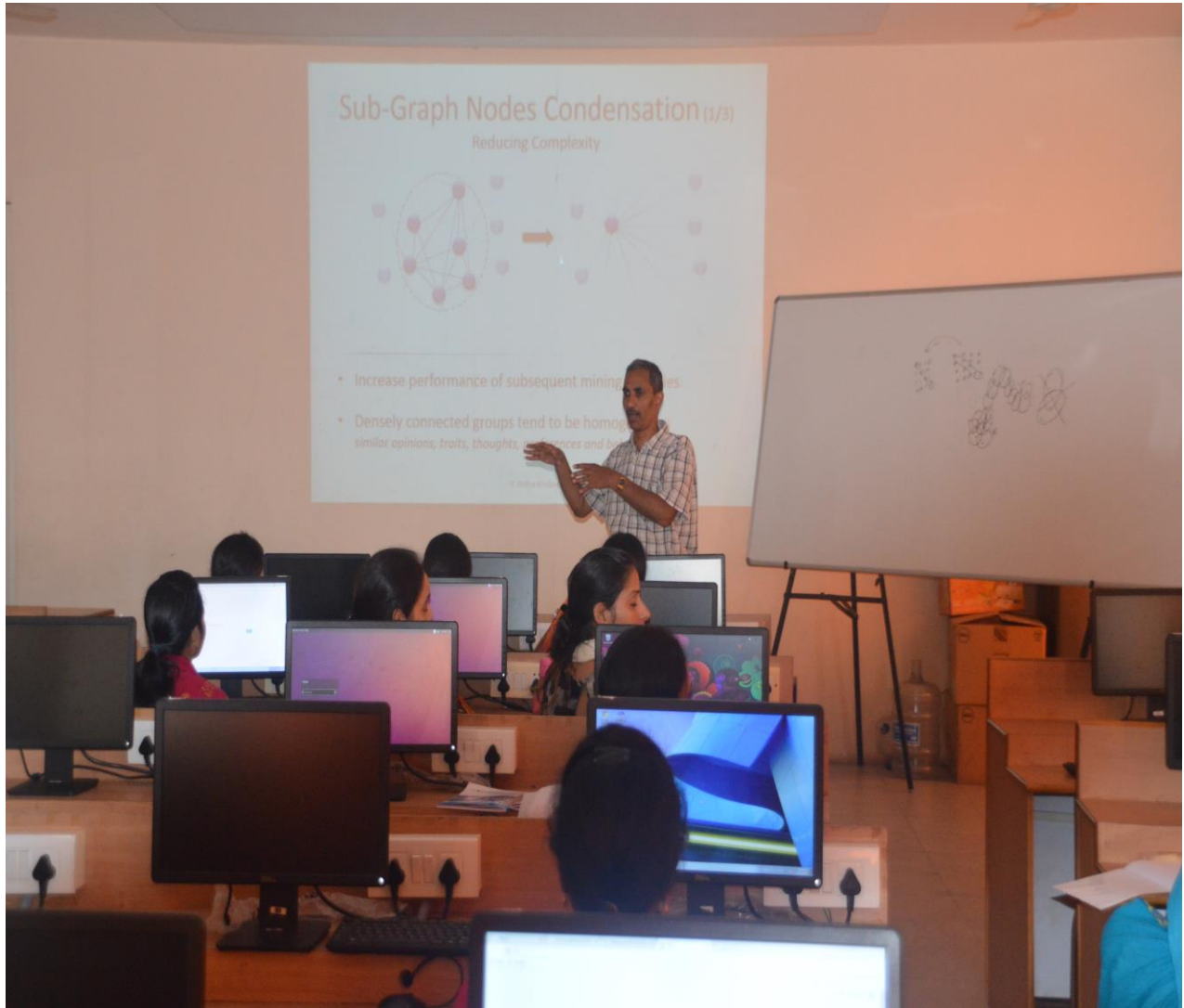
Place:

Date:



SREYAS Institute of Engineering & Technology

(Approved by AICTE, New Delhi | Affiliated to JNTUH, Hyderabad)
Hyderabad | PIN: 500068





SREYAS Institute of Engineering & Technology

(Approved by AICTE, New Delhi | Affiliated to JNTUH, Hyderabad)
Hyderabad | PIN: 500068

PURPOSE OF WORKSHOP

Edge computing is a distributed computing concept that integrates intelligence to edge devices, also called edge nodes, allowing data to be processed and analyzed in real time near the data collection source and need not to be uploaded directly to the cloud or to a centralized data processing system.

Here, data is processed close to the data collection source, so there is no longer the need to transfer data to the cloud or to an on-premises data center for processing and analysis which will lessen the load on both network and servers.

In addition to accelerating digital transformation for industrial and manufacturing enterprises, edge computing technology allows for more innovations including artificial intelligence and machine learning applications that are thriving with the breakthroughs in deep learning and the upgrade of hardware architectures.

Billions of bytes of data, generated at the network edge, put great demands on data processing and structural optimization. Therefore, there exists a strong demand to integrate Edge Computing and AI, which gives birth to Edge Intelligence.



SREYAS Institute of Engineering & Technology

(Approved by AICTE, New Delhi | Affiliated to JNTUH, Hyderabad)
Hyderabad | PIN: 500068

RESOURCE PERSONS PROFILE

Dr.A.Rama Murthy,
Professor.

Name & Address	Email id & Contact no
Dr. A. Rama Murthy	ram111_sai@yahoo.com +91-9848380889

Qualification: M.Tech, Ph.D.

Degree	Discipline	Institute/University	Percentage	Year
Ph.D	Computer Science and Systems Engineering	Andhra university, Waltair.	Completed	Jan 2012

Technical SkillSet

Programming Languages	Java, Cpp, C, HTML, XML, Pl/Sql , 8085, 8051 Assembly Language
Operating Systems	Windows 98/NT/2000/Vista, Unix/Linux, MS-DOS.
Database Technologies	Oracle, MS-Access.
J2EE Technologies	Servlets, JSP, EJB, JDBC

Research On...

Domain Area	Specialization
Bio-Informatics	Diabetic Cardiomyopathy



SREYAS Institute of Engineering & Technology

(Approved by AICTE, New Delhi | Affiliated to JNTUH, Hyderabad)
Hyderabad | PIN: 500068

Research Work & Publications

S.No	Title of the Paper	Published in Journals
1	Protemic Analysis in Diabetic Cardiomyopathy	Bio informatic & Biological Insight 2008; 2:1-4 Publication online 2008 Jan 21
2	Optimize Pattren Discovery for Mining Text	International Journal on Computer Science & Technology June 2013
3	Recovering of Confidential policy administration Online Social Networks	International Journal of Reviews on Recent Electronics & Computer Science Nov 2013
4	Depletion Attacks: Automated Identification and Calculation in Wireless Sensor Networks	International Journal & Scientific Engineering and Research March 2014
5	An Algorithm of Anonymous Id Assignment for Secure Data storing on a Network	International Journal of Science Engineering and Advanced Technology Dec 2014
6	A Routing Algorithm to reduce the Queuing complexity in Communication Networks	International Journal of Science Engineering and Advanced Technology Dec 2014
7	An Efficient Intrusion and Detection Mechanism to protect Manet from Attacks	International Journal of Science Engineering and Advanced Technology Dec 2014
8	Transmission Mechanism to Effectively increse the social TV Viewing experiance by Cloud	International Journal of Science Engineering and Advanced Technology Dec 2014
9	Privacy perceptive tag in social Network data anonymization	International Journal and magazines
S.No	Title of the Paper	Published in Conferences
1	Improving Performance and Privacy in Location based service Application using GPS	ICETEN 16, Sri Narayana Gurukulam College of Engineering, Kollenchery, Ernakulan District, Kerala.



SREYAS Institute of Engineering & Technology

(Approved by AICTE, New Delhi | Affiliated to JNTUH, Hyderabad)
Hyderabad | PIN: 500068

Dr. PADMAJA.PULICHERLA

E-mail: [padmaja.j2ee@gmail.com.](mailto:padmaja.j2ee@gmail.com),

Mobile : 91- 9010570176

Experience Summary:

3 years of experience in Software Industry and **9 years** of experience in Teaching Field.

Academic Profile :

- ❖ **Awarded Ph.D in the Department of Computer Science and Engineering, A.N.U., A.P (India).**
- ❖ Ractified in August 2007 at Bapatla Engineering College.
- ❖ Participated in **NACC** work in November 2008, when working in M.L.E.C.

Technical Skills :

- Programming languages : C, C++, JAVA,IOT
- Backend: ORACLE 9i
- Operating System: Windows

Field of interest:

Object Oriented Technology, Software Engineering, Operating Systems, Algorithms, Data Structures, Artificial Intelligence and Mathematics.

Subject Taught:

Object Oriented Programming using Java, Operating Systems, Software Engineering, Artificial Intelligence.

