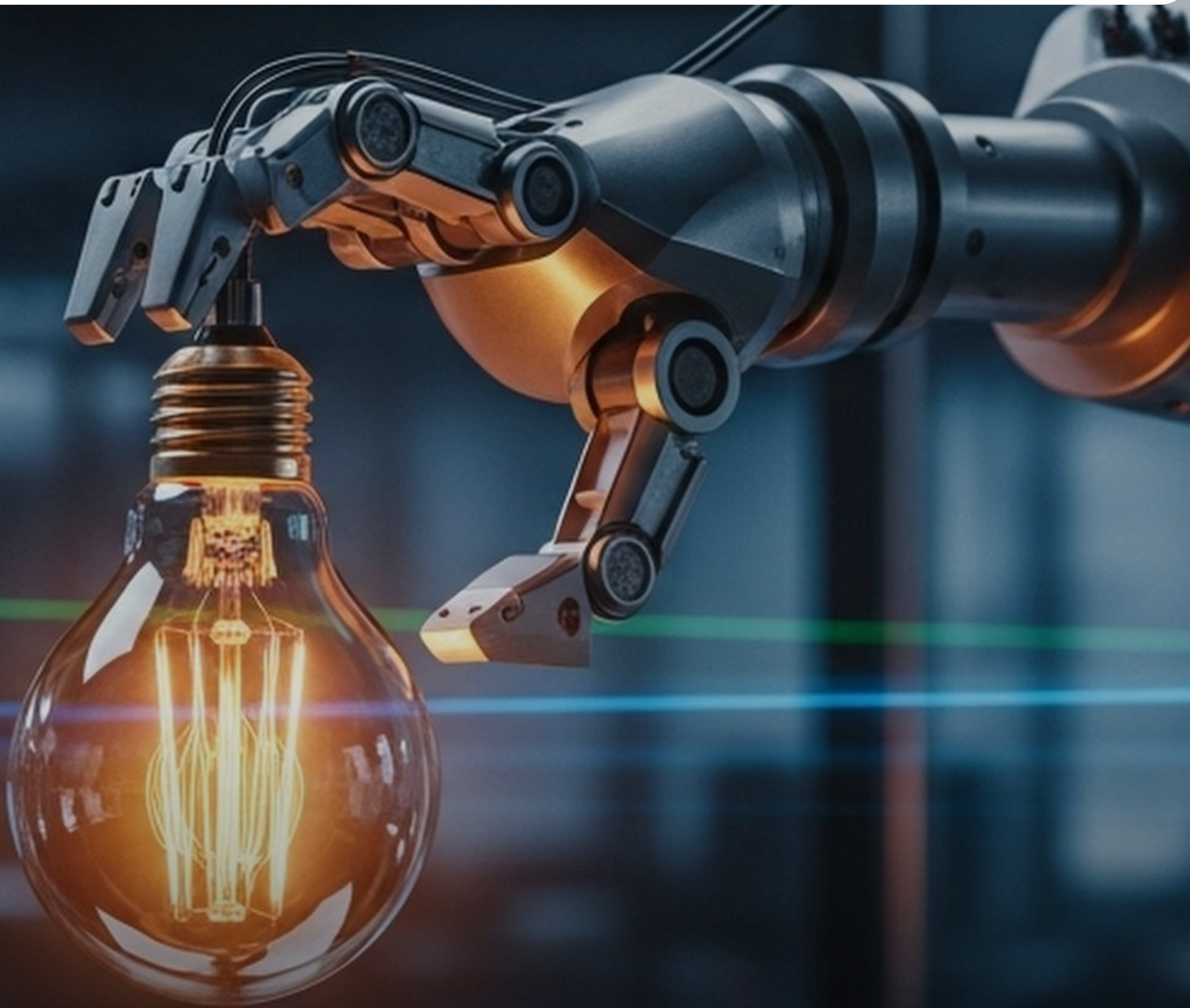




SREYAS
INSTITUTE OF ENGINEERING AND TECHNOLOGY
AUTONOMOUS

DEPT OF
AI&ML



AIML

Chronicles

Volume 3 Issue 2

Institute Beliefs

VISION

To be a centre of excellence in technical education to empower the young talent through quality education and innovative engineering for well being of the society.

MISSION

1. Provide quality education with innovative methodology and intellectual human capital.
2. Provide conducive environment for research and developmental activities
3. Inculcate holistic approach towards nature, society and human ethics with lifelong learning attitude.

Department of CSE (AI&ML)

VISION

To produce competent professionals in the field of AI&ML by imparting state-of-art technologies and inculcating strong ethical values.

MISSION

1. To impart technical education competency with high quality educational practices through qualified human resources and provisioning of good infrastructure.
2. Accomplish process to enhance knowledge in the academic and foster research-oriented environment.
3. To encourage education-oriented learning and social responsibility with professional ethics.

Leadership Insights



SRI ANANTULA HRIDAY REDDY **VICECHAIRMAN**

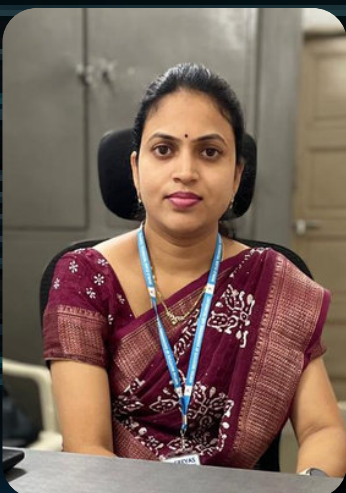
With a Post-Graduate Diploma in Marketing Management and senior industry experience, I founded Sreyas to create a premier engineering college rooted in global best practices. My visits to top international universities shaped the vision for a green, well-equipped campus that inspires innovation. At Sreyas, students explore new technologies and grow into skilled engineers and responsible citizens. My hands-on approach ensures they receive the support they need to thrive.



DR. K. SAGAR **PRINCIPAL**

At Sreyas, we are committed to academic excellence and innovation. As Principal, my goal is to uphold and advance the high standards of teaching and research that define our institution.

With over 26 years in teaching and administration, I focus on guiding quality education through collaboration with our dedicated faculty and motivated students. Together, we aim to develop future-ready professionals with strong skills, ethical values, and a commitment to societal progress.



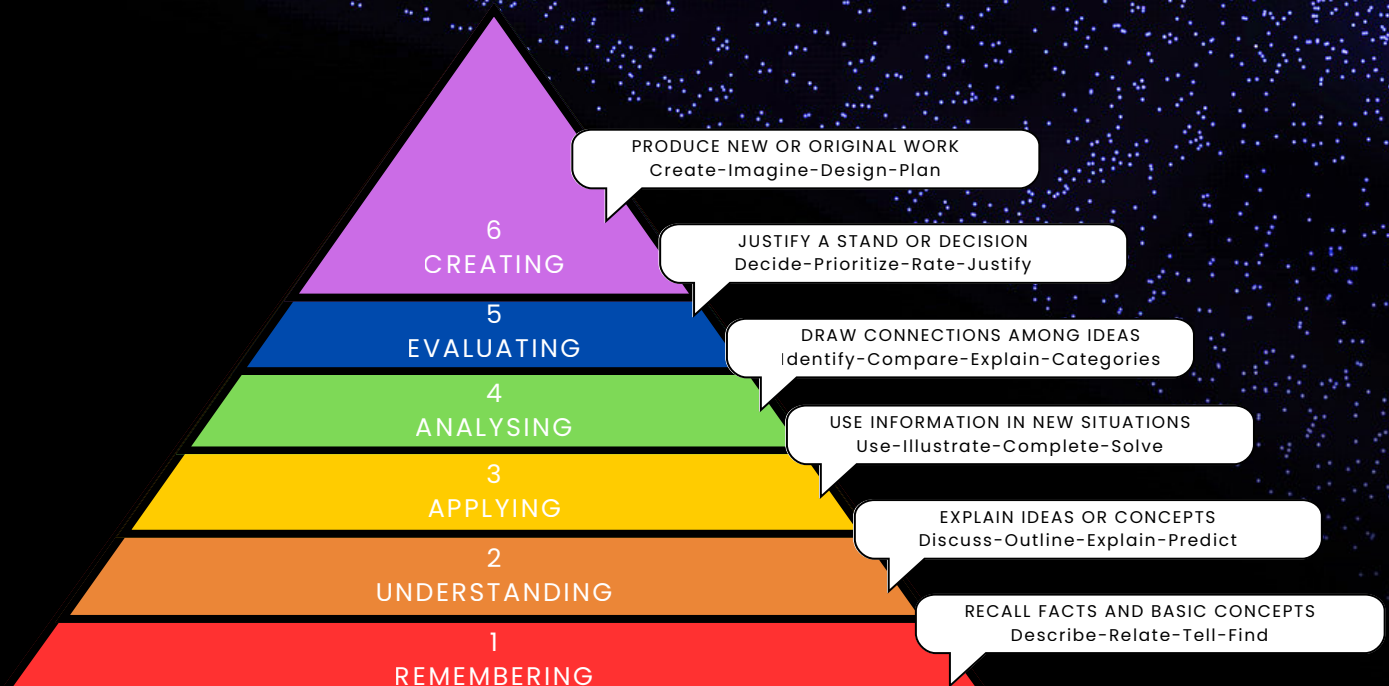
DR. A. SWATHI **HEAD OF DEPARTMENT**

My passion for AI began with its potential to transform lives. As Head of the Department, I strive to inspire students to think creatively and tackle real-world problems.

Built on integrity, learning, and collaboration, our department encourages innovation and growth. We aim to lead in AI research and education, empowering students through hands-on projects that drive meaningful impact.

Frame Work for Implementary Outcome Based Education

Outcome-Based Education (OBE) is a student-centered approach that fundamentally shifts the focus of education from what is taught to what students are able to know and do by the end of their learning journey. It begins with clearly defining these desired learning outcomes, which then guide every aspect of the curriculum, instructional methods, and assessment strategies. Unlike traditional models, OBE emphasizes developing practical skills and competencies like critical thinking, problem-solving, and communication, ensuring graduates are well-equipped for real-world challenges. Through continuous assessment and feedback, the system constantly refines itself to ensure that all students achieve the specified outcomes, making education more relevant, effective, and accountable.



CULTURAL EVENTS



The department organizes cultural fests that foster creativity, teamwork, and community, offering students a break from academics. These events showcase talents in music, dance, theater, and art, promoting holistic development



Cultural fests enhance students' soft skills, essential for personal and professional success. They promote collaboration, leadership, and communication, ensuring students are industry-ready and prepared for diverse environments.

NSS EVENTS

The Department of AI & ML at Sreyas Institute of Engineering and Technology is known for nurturing exceptional tech talent. However, their dedication extends far beyond the realm of algorithms and artificial intelligence. These students are also actively involved in the National Service Scheme (NSS), demonstrating a commitment to social responsibility and community development. From Code to Collaboration: Embracing NSS CSE(AI&ML) students consistently participate in various NSS initiatives. From tree plantation drives and cleanliness campaigns to awareness programs on social issues, they actively contribute to creating a positive impact. Their participation brings a unique blend of technical expertise and youthful zeal to every event. Bridging the Gap: Technology for Social Good The involvement of CSE(AI&ML) students adds a valuable technological dimension to NSS activities. Their knowledge of AI and ML can be harnessed to develop innovative solutions for social challenges. These students can potentially create apps or tools to raise awareness on critical issues or streamline volunteer efforts.



Sreyas Institute's CSE (AI&ML) Students: High Placements!



Koyugura Siddhardha- 9 LPA



A Journey of Gratitude
As I pen down this milestone moment of securing the highest package, my heart overflows with gratitude for the Sreyas Institute of Engineering and Technology.

K Akshitha Ravinder-7 LPA



Dream Big, Work Hard A Journey of Gratitude As I pen down this milestone moment of securing the highest package, This institution has been my foundation for growth and success.

Naveen Narri -7 LPA



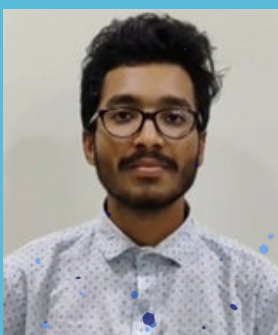
What truly sets Sreyas apart is its unwavering commitment to student success. The faculty's mentorship, training programs, and the countless resources provided have played a vital role in shaping my journey.

Venkata Manaswitha Sunkara- 7 LPA



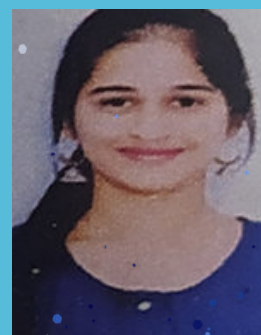
Small Steps, Big Impact Every journey begins with small, consistent steps. Be it technical workshops, hands-on projects, or mock interview sessions.

Punna Pavan S -7 LPA



The path to success is never without hurdles, but Sreyas taught me to face challenges head-on. There were moments of self-doubt and setbacks, but the supportive culture here made all the difference.

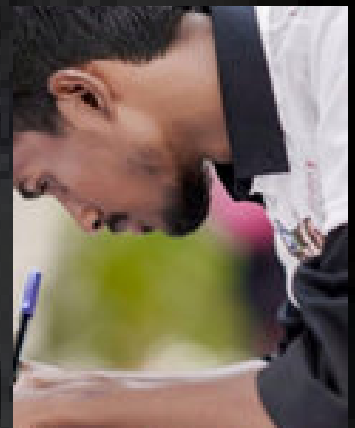
Hitishini -7 LPA



A Message to Aspiring Students To all my juniors and peers, I want to say this: the future is yours to create.

SIGNATURE DAY

It's a bittersweet moment, filled with laughter, nostalgia, and a hint of sadness. As we write little messages, draw silly doodles, and exchange hugs, We can't help but think about how far we've come and how much we've grown. This college that once symbolized rules and routine now feels like a canvas of memories and emotions.



Annual DAY



The Annual Day celebration is a special occasion where our entire institution comes together to showcase the spirit of talent, creativity, and achievement. It is a day dedicated to honouring the hard work of our students, the guidance of our teachers, and the support of our parents. The event features a vibrant lineup of cultural performances, inspiring speeches, and prize distributions that highlight the accomplishments of the year.

PLACEMENTS

